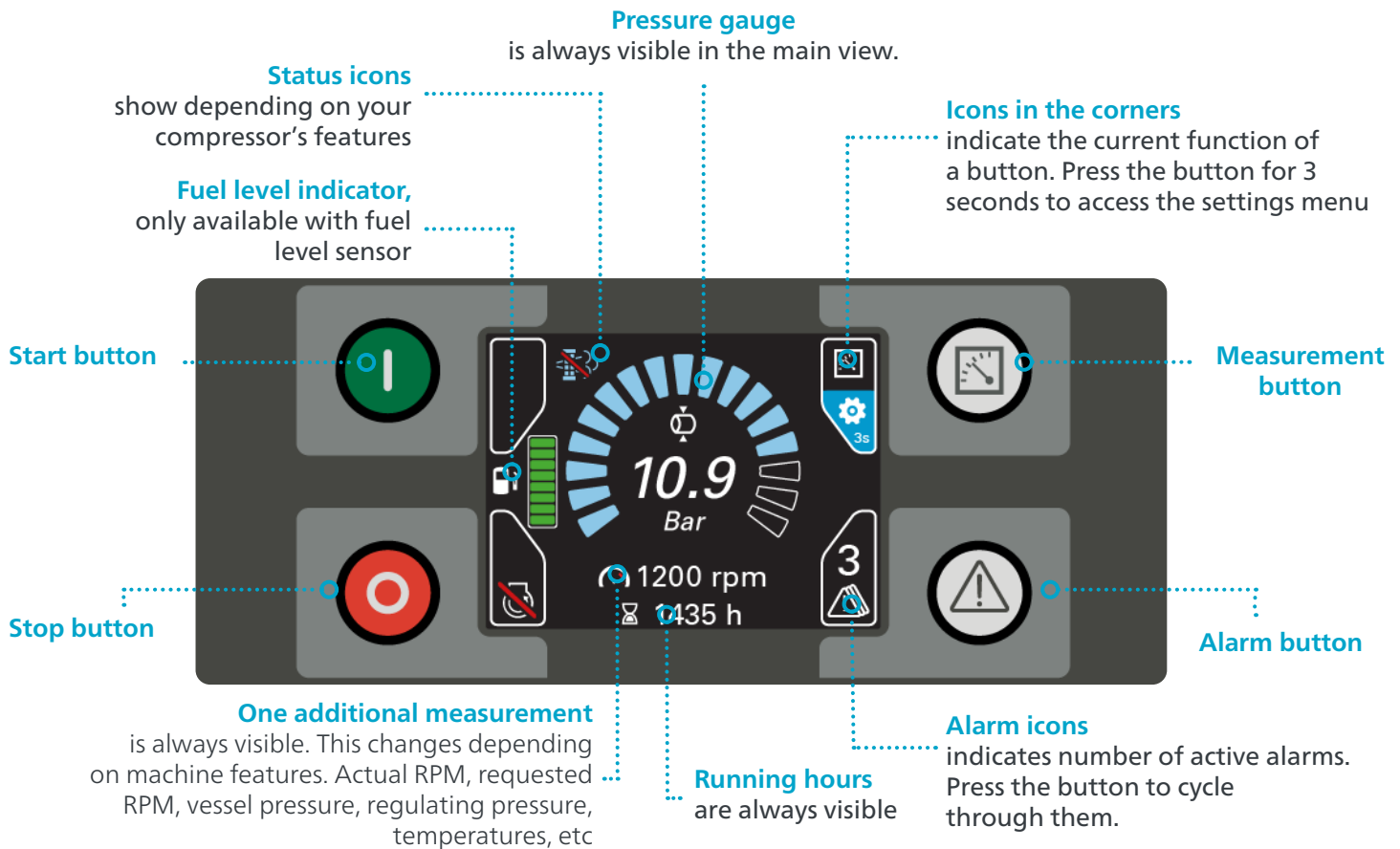


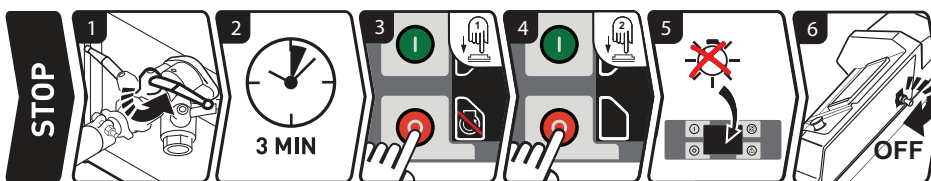
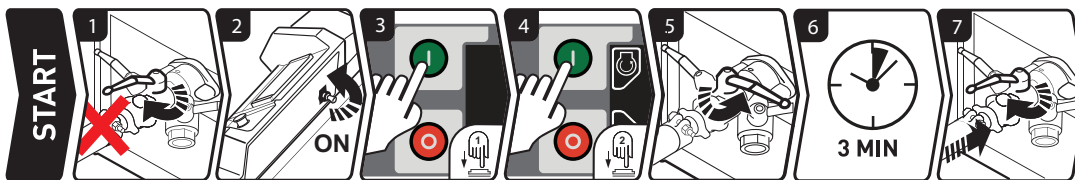
# Introducing your Xc1004 controller

Atlas Copco

The Xc1004 has a self-explanatory interface, with buttons that change function as you browse through the menus. The icons in the four corners explain the active function of every button. To access advanced settings, press and hold the measurements button for 3 seconds.

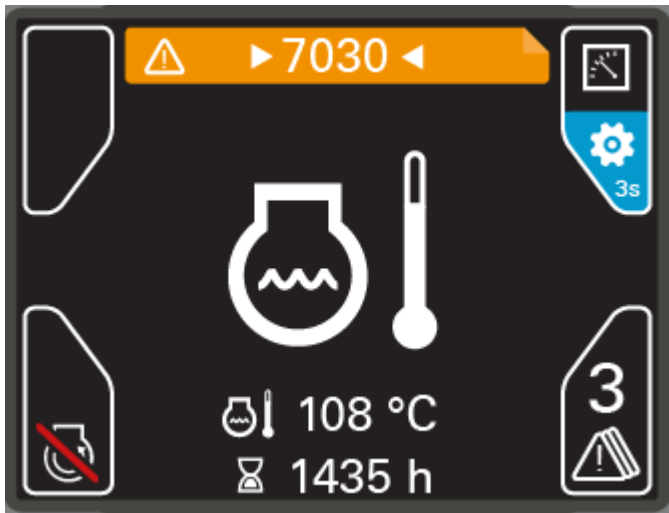


## Starting your compressor with the Xc1004



This Quick Start Guide helps you to get up and running in no time. However, this document does not replace the Instruction Manual delivered with the machine. Always read the instruction manual for the correct use, safety precautions and guidelines on preventive maintenance of your equipment. Keep the manual with the compressor, so any operator has quick access to the document.

## List of most common alarm codes



In the case of an alarm or fault, your Xc1004 will give you a orange or red banner with an alarm code and icon.

The **red banner** appears in case of a shut-down, which means the machine is stopped to protect the operator or the compressor.

The **orange banner** appears in case of a warning.

This list shows you the most common alarm codes and their meaning. If you are presented with another code, or in case of doubt, our service technicians are available to help out.

*This screen warns the operator of an issue with the engine coolant temperature.*

Icon	Number	Alarms
		General alarm icon
	1500/1521/1522	Service interval
	2000	Emergency stop
	2010	Coolant temperature alarm
	2020	Engine oil pressure alarm
	2030	Engine coolant level
	2040	Compressor element temperature
	3000/3010	Fuel level alarm
	3050/3060	High vessel pressure alarm
	3080	Vessel pressure sensor circuit
	3130	Regulating pressure sensor circuit
	3450/3460	Battery low/high alarm
	4000/4010/4020	LP Element temperature alarm
	4040	LP Element temperature sensor circuit

Icon	Number	Alarms
	4050/4060	Engine coolant temperature alarm
	4070	Engine coolant temperature sensor circuit
	4990	VDO sensor circuit
	6309	Engine preheat failure
	6327	Start failure
	6420	Stop failure
	6427	Run failure
	7000	ECU communication error
	7006	Mall function indicator lamp
	7007/7008/7009	ECU red/amber/protect lamp
	7020	Engine Speed alarm
	7030	ECU engine coolant temperature alarm
	7040	ECU engine oil pressure alarm
	7150/7160	DEF tank level 1/level 2

